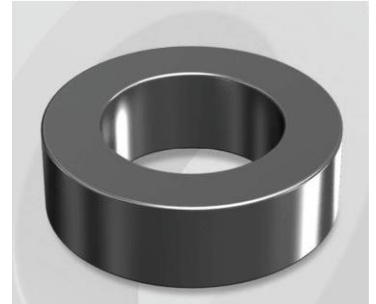


CS610060G20

Electrical Characteristics

Material	Permeability (μ)	AL \pm 8% (nH/N ²)	DCB (% , min) @ 50 Oe	Coreloss (mW/cm ³ , max) @50kHz, 300G
SENDUST	60	153	64.4	27

OD : 610



Core Dimensions

Dimensions		Uncoated		Coated		Color	Packaging
		(mm)	(inch)	(mm)	(inch)		
OD	(Max)	62.00	2.441	63.10	2.484	Black	Box Qty = 24 pcs
ID	(min)	32.60	1.283	31.37	1.235		
HT	(max)	20.00	0.787	21.00	0.827		

Physical Characteristics

Cross Section (A)	Path Length (l)	Window Area (Wa)	Volume (V)	Breakdown Voltage (Vac)
2.940 cm ²	14.37 cm	7.73 cm ²	42.248 cm ³	1,000
0.456 in ²	5.657 in	1,525,558 cmil	2.5780 in ³	

Winding Information

0% Winding length/turn (cm)		
7.373		
40% winding factor Surface Area (cm ²)		
158.87		
40% Wound Di.(mm)		
OD	ID	HT
70.78	20.54	30.26

Typical DC Bias Performance

